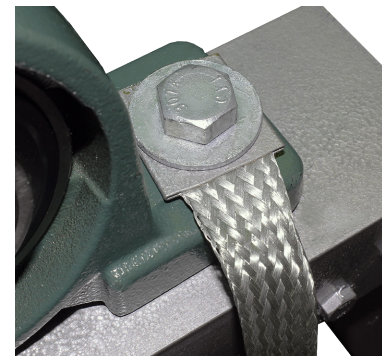


The WILEY bonding jumpers are used to create an electrical connection between two pieces of electrically conductive metal where a WEEB® washer is not required. The bonding jumpers are a reliable and labor saving bonding solution for applications that require flexibility and durability. Perfect for applications requiring a bond between structural steel and moving components of a solar array, such as photovoltaic systems using single or dual axis trackers.

ITEM #	CATALOG #	LENGTH In. [mm]	WIDTH In. [mm]	HEIGHT In. [mm]	HOLE SIZE In. [mm]	GAUGE	HARDWARE	ASSEMBLED	TORQUE
50068085	WILEYBRAID12-12	12.000 [304.80]	1.200 [30.48]	0.119 [3.02]	0.560 [14.22]	6 AWG	No WEEB washer; 1/2" mounting hardware not included	N/A	N/A
50067320	WILEYBRAID18-12	18.000 [457.2]	1.200 [30.48]	0.119 [3.02]	0.560 [14.22]	6 AWG	No WEEB washer; 1/2" mounting hardware not included	N/A	N/A
50066980	WILEYBRAID24-12	24.000 [609.60]	1.200 [30.48]	0.119 [3.02]	0.560 [14.22]	6 AWG	No WEEB washer; 1/2" mounting hardware not included	N/A	N/A
50067325	WILEYBRAID30-12	30.000 [762.00]	1.200 [30.48]	0.119 [3.02]	0.560 [14.22]	6 AWG	No WEEB washer; 1/2" mounting hardware not included	N/A	N/A
50067330	WILEYBRAID36-12	36.000 [914.40]	1.200 [30.48]	0.119 [3.02]	0.560 [14.22]	6 AWG	No WEEB washer; 1/2" mounting hardware not included	N/A	N/A
50067259	WILEYBRAID18-916	18.000 [457.2]	1.200 [30.48]	0.119 [3.02]	0.625 [15.88]	6 AWG	No WEEB washer; 9/16" mounting hardware not included	N/A	N/A
50067264	WILEYBRAID24-916	24.000 [609.60]	1.200 [30.48]	0.119 [3.02]	0.625 [15.88]	6 AWG	No WEEB washer; 9/16" mounting hardware not included	N/A	N/A
50067389	WILEYBRAID30-916	30.000 [762.00]	1.200 [30.48]	0.119 [3.02]	0.625 [15.88]	6 AWG	No WEEB washer; 9/16" mounting hardware not included	N/A	N/A
50067269	WILEYBRAID36-916	36.000 [914.40]	1.200 [30.48]	0.119 [3.02]	0.625 [15.88]	6 AWG	No WEEB washer; 9/16" mounting hardware not included	N/A	N/A
50066975	WILEYBRAID18-34	18.000 [457.2]	1.200 [30.48]	0.119 [3.02]	0.805 [20.45]	6 AWG	No WEEB washer; 3/4" mounting hardware not included	N/A	N/A
50067335	WILEYBRAID24-34	24.000 [609.60]	1.200 [30.48]	0.119 [3.02]	0.805 [20.45]	6 AWG	No WEEB washer; 3/4" mounting hardware not included	N/A	N/A
50067340	WILEYBRAID30-34	30.000 [762.00]	1.200 [30.48]	0.119 [3.02]	0.805 [20.45]	6 AWG	No WEEB washer; 3/4" mounting hardware not included	N/A	N/A
50067345	WILEYBRAID36-34	36.000 [914.40]	1.200 [30.48]	0.119 [3.02]	0.805 [20.45]	6 AWG	No WEEB washer; 3/4" mounting hardware not included	N/A	N/A

- Labor saving design that allows for quick and easy installations
- High quality solutions that are ideal for outdoor applications
- Made from corrosion resistant, tin plated, copper braid
- Compatible with M12 (1/2"), M14 (9/16") & M20 (3/4") hardware
- Available unassembled, without installation hardware
- Perfect for:
 - Applications requiring a bond between structural steel and moving components
 - Photovoltaic systems using single or dual axis trackers
 - Expansion joints and rail splices
 - Where a WEEB® washer is not required
- UL 467 Listed for grounding and bonding
- Equivalent to 6AWG copper wire
- Available in standard lengths of 18" to 36"
- Custom sizes available upon request



Customer Service 1-800-346-4175 | International 603-647-5299 | Canada 1-800-387-6487 | www.burndy.com